

BETHLEHEM TOWNSHIP ACTIVE TRANSPORTATION PLAN

Steering Committee Meeting #1

January 23, 2023

1. Introductions
2. What is an active transportation plan?
3. Project Overview
4. WalkWorks Grant Requirements
5. Role of Steering Committee
6. Visioning Exercise
7. Mapping Exercise
8. Draft Active Transportation Toolbox
9. Next Steps

WHAT IS AN ACTIVE TRANSPORTATION PLAN?

Human-powered transportation – walking, biking, and rolling

- Benefits

- Safety
- Public health
- Congestion
- Access and mobility
- Local economy



WHO ARE WE PLANNING FOR?



Leisure Walker



Active Walker/Jogger



Commuter/Daily Errands



Casual Cyclist



Confident Cyclist



Advanced Cyclist

PROJECT OVERVIEW

Active Transportation Plan

Cost and Funding: \$42,500

- WalkWorks Grant: \$27,500

Timeline: ~9-months

- WalkWorks Deadline: September 29, 2023

WALKWORKS GRANT REQUIREMENTS

- Regular Progress Meetings
- Community Engagement
- Public Health Considerations
- Performance Measures
 - The number of potential linear miles* of multi-use paths, sidewalks, bike lanes, and public transit routes connecting everyday destinations;
 - The number of potential connections of destinations,* based on plans for the above; and
 - The number of potential new or enhanced sites,* identified in the plan or policy, that will be connected by activity-friendly routes.

*All grant recipients will be asked in future to share *actual* numbers of miles, connected destinations, enhanced sites as a result of implementing their plans and policies.

PROJECT BACKGROUND

- Previous Plans & Ongoing Projects
 - Township Comprehensive Plan (2017) – *Update in coming years*
 - Walk/Roll LV – Active Transportation Plan (2020)
 - Bethlehem Township Ordinances
 - LANTA – Lehigh Valley Enhanced Bus/BRT Study (2014)

Comprehensive Plan Update 2017

Bethlehem Township - Northampton County, PA



Prepared by:

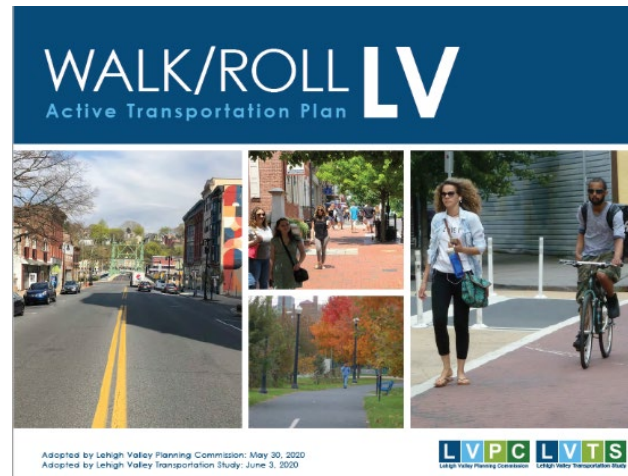
The Bethlehem Township Comprehensive Plan Advisory Committee

with the assistance of:

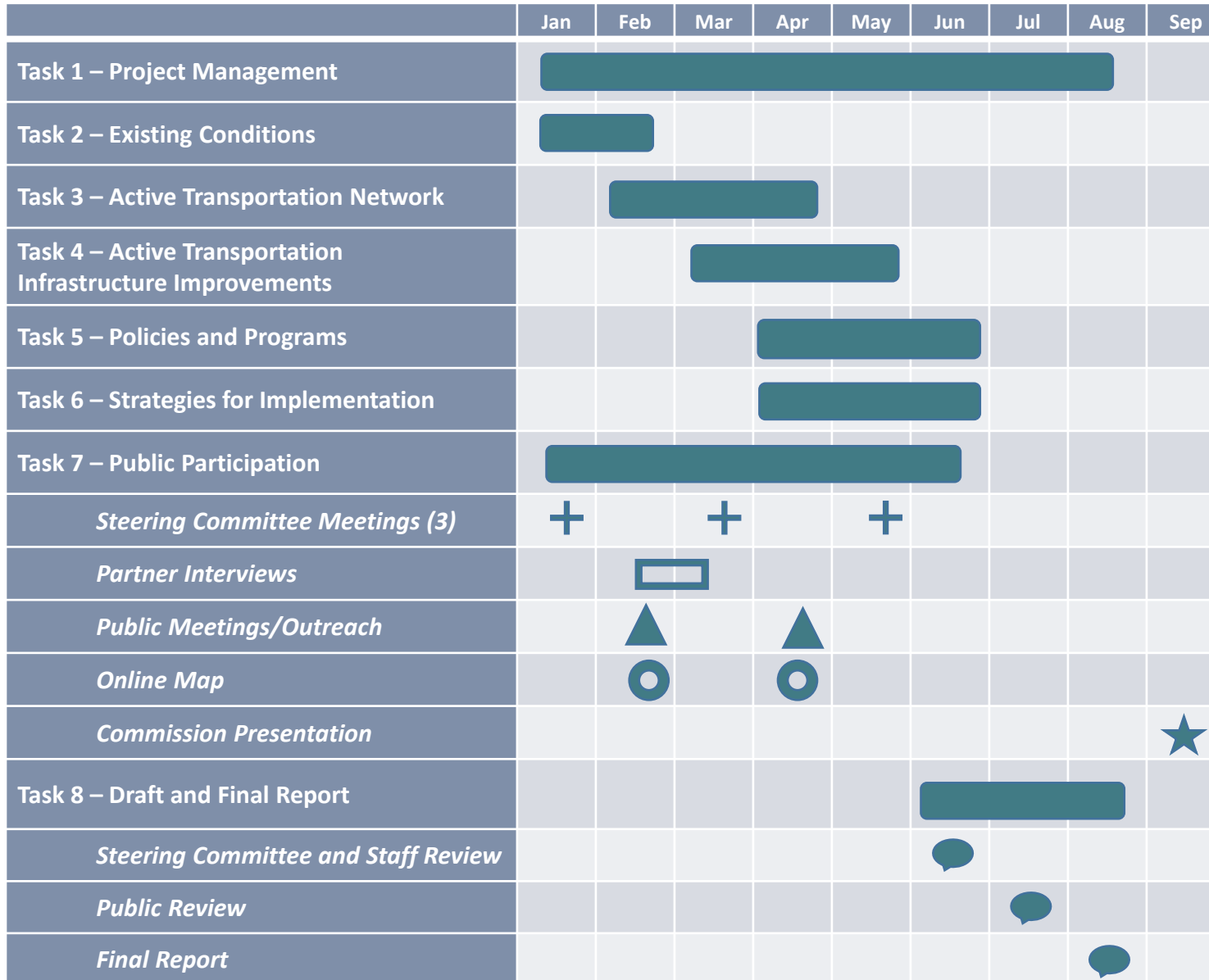


Final Draft: March 1, 2017

Adopted: April 17, 2017



SCOPE AND SCHEDULE



Steering Committee

Meeting Dates

1/23/23

3/27/23

5/22/23

ROLE OF THE STEERING COMMITTEE

- Provide guidance, input, and insights to the consultant team throughout the planning process
 - *Three Committee Meetings*
 - *Coordination between meetings will be conducted via email*
- Review and provide comments on draft deliverables
- Act as a liaison and provide information sharing between your organization and the project team
- Assist with additional stakeholder and public involvement activities
 - *Two Public Workshops*

VISIONING EXERCISE

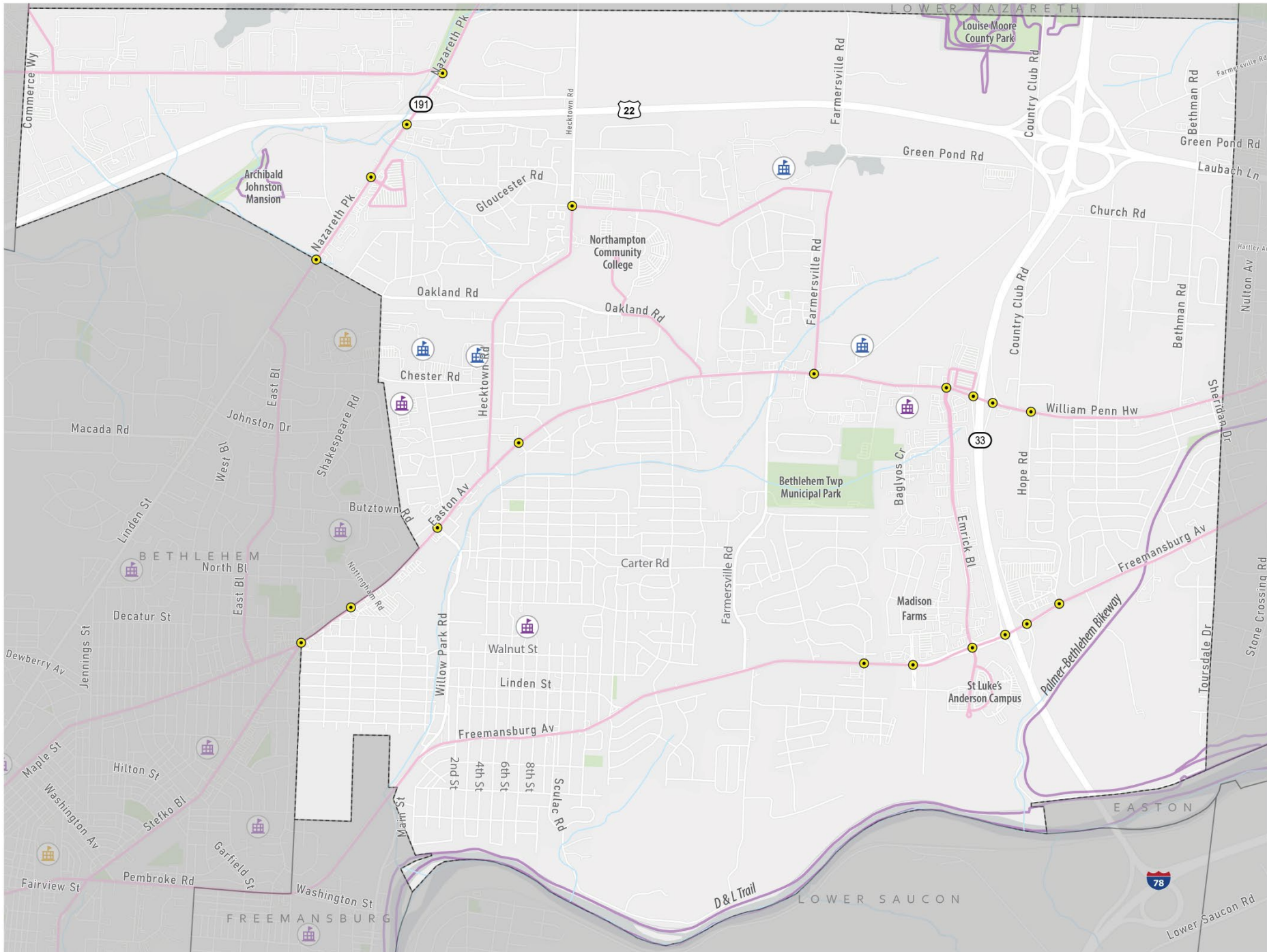
Quotations from the Future




What will people say about walking and biking in Bethlehem Township in the next five, ten, or twenty years if elements of this plan are implemented?

Samples:


- *I felt safe and comfortable walking to Madison Farms to shop.*
- *I bought my house because my kids can safely bike to school.*
- *My family loves to bike to the D&L Canal on the weekend.*

OVERVIEW MAP



-  Parks
-  Township Border
-  Signal Intersection
-  Trails
-  Streams
-  Elementary School
-  Middle School
-  High School
-  LANTA Routes

Mapping Exercise

-  Favorite Place in the Township to walk or bike
-  Other key destinations for walking and biking trips
-  Biggest challenge or barrier to walking and biking
-  Key gaps in the sidewalk, trail, or on-road biking network
-  Hi-light unsafe roadways and corridors

0 0.25 0.5 0.75 1 Miles

MAPPING EXERCISE – KEY ASSETS



Favorite place in the township to walk or bike



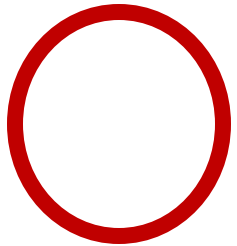
Other key destinations (for walking and biking trips)

- *including regional connections/destinations*
- *including destinations that may be outside of the township*

MAPPING EXERCISE – KEY ISSUES



Biggest challenge or barrier to walking and biking



Key gaps in the sidewalk, trail, or on-road biking network

- *Other problem locations, such as intersections, crossing locations, or bridges*

PRIORITIES



What are your **top three** active transportation related priorities for the township?

WHAT IS A TRAIL?

What do you imagine when you picture a “trail”?

DRAFT TOOLBOX

Off-Road Bicycle and Pedestrian Facilities

**Shared Use Path
(Multi-Use Trail)**



Pedestrian Path



Sidewalk



Foot Path



Target Users	Ped, Bike, Other non-motorized users	Ped	Ped	Ped
Width	10' + 8' (Permissible)	5' +	5' +	Varies
Surface	Asphalt; Compacted Stone; Concrete	Asphalt; Concrete; Compacted Stone	Concrete (typically); Brick; Asphalt	Grass; Dirt; Other Natural surfaces; Steps and stairs

DRAFT TOOLBOX

On-Road Bicycle and Pedestrian Facilities

Shared
Roadway



Shared Lane
(Sharrow)



Paved Shoulder



Bicycle
Lane



Visually
Separated
Bike Lane



Physically
Separated
Bike Lane



SEPARATION FROM TRAFFIC

← LESS
SEPARATION

MORE
SEPARATION →

Bicycle Route



DRAFT TOOLBOX

Bicycle and Pedestrian Crossings

Marked Crosswalk



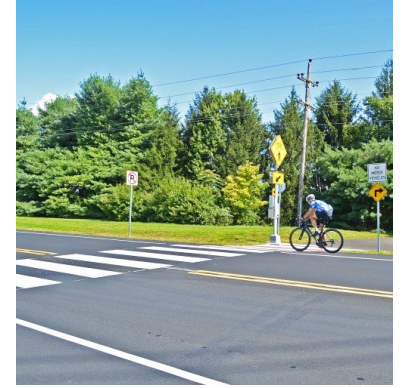
Decorative Crosswalk



Raised Crosswalk/
Intersection



Midblock Crossing



Trail Crossing



Median/Refuge Island



Flashing Warning
Device



Curb Extension/Bulb-
out



DRAFT TOOLBOX

Enhancing Users' Experience

Landscaping/Green Infrastructure



Streetscape Amenities



Seating (Overlooks, Benches, View Areas)



Public Art



Lighting



Wayfinding and Interpretive Signage



Bicycle Parking/Fix-it Stations



NEXT STEPS

- Partner Interviews (up to 5): *February*
- Field Visit: *February*
- Existing conditions analysis
- Develop draft vision and goals
- Develop active transportation toolbox
- Public Meeting #1 and Online Map: *February 28th*