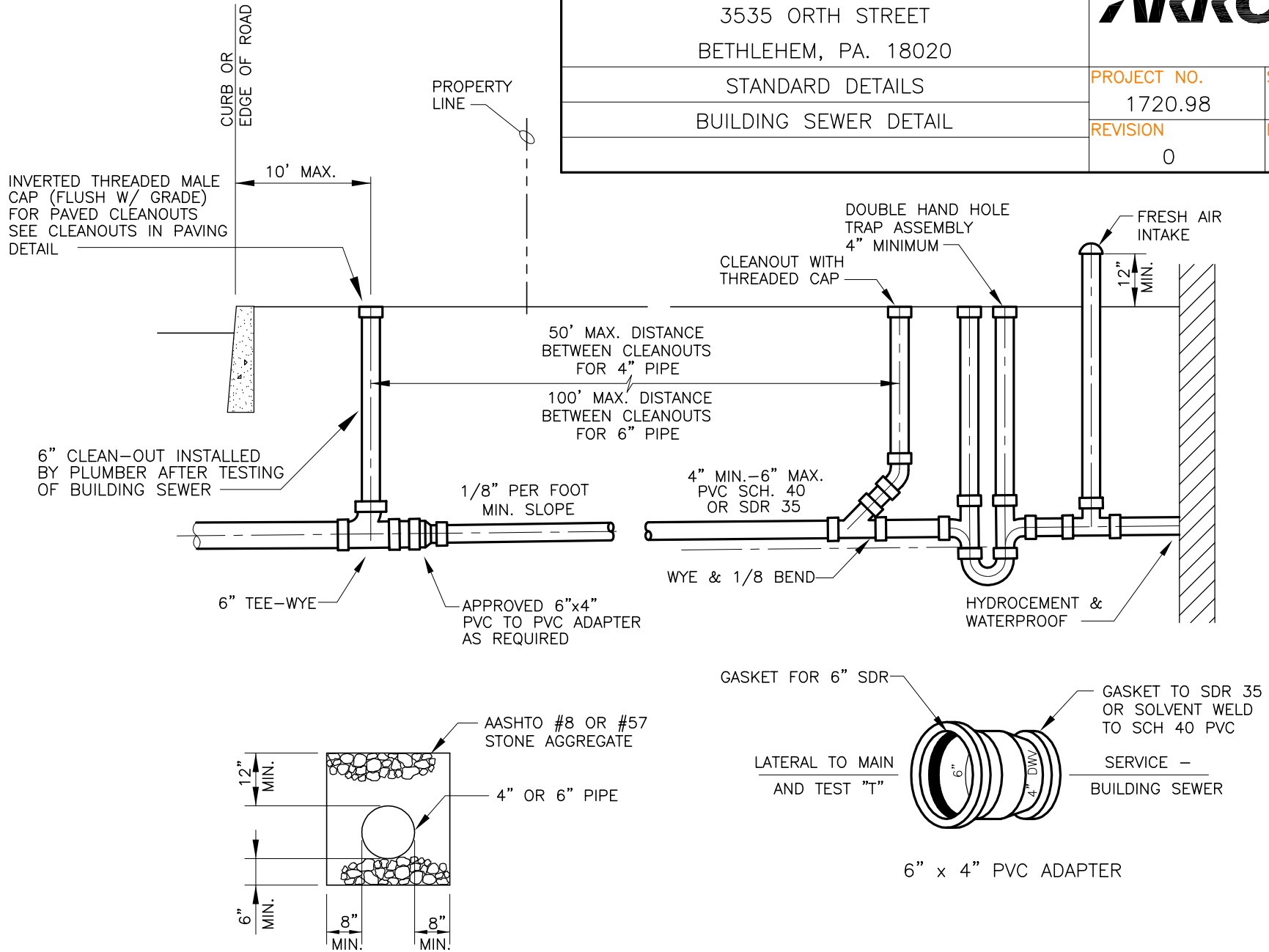


BETHLEHEM TOWNSHIP MUNICIPAL AUTHORITY  
 3535 ORTH STREET  
 BETHLEHEM, PA. 18020

**ARRO** Suite 100  
 649 North Lewis Road  
 Limerick, PA 19468  
 Tel 610.495.0303  
 Fax 610.495.5855

STANDARD DETAILS  
 BUILDING SEWER DETAIL

PROJECT NO.	SCALE
1720.98	NONE
REVISION	DATE
0	12/2015



BUILDING SEWER DETAIL