

STORMWATER SOLUTIONS

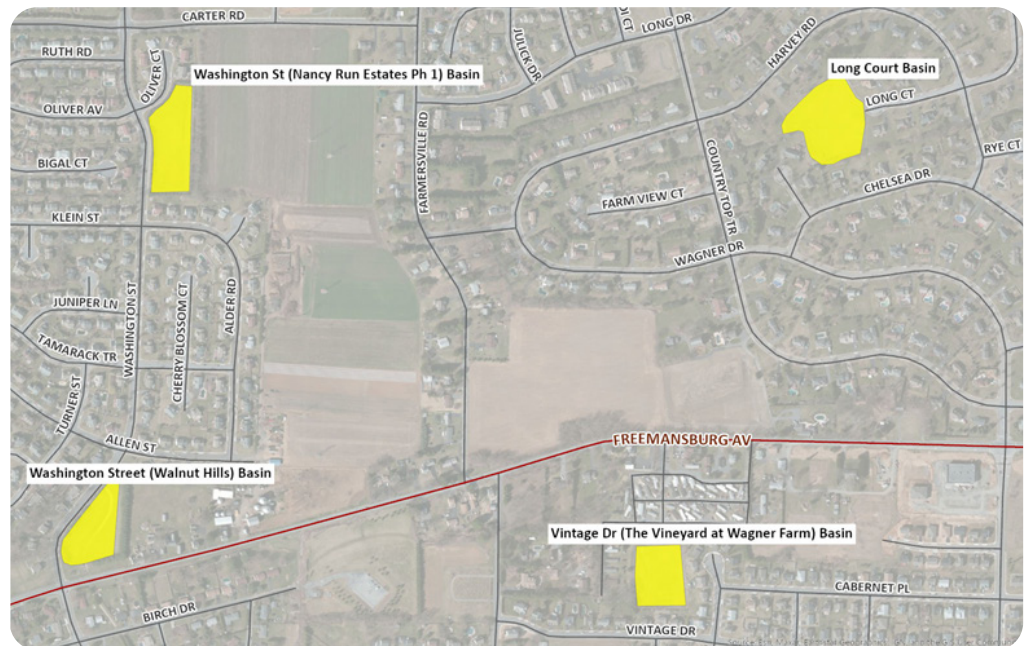
CONSTRUCTION TO BEGIN ON STORMWATER MANAGEMENT FACILITIES

SPRING 2023

The Bethlehem Township Municipal Authority will be undertaking the first round of pollutant reduction projects this spring, as required by the PA Department of Environmental Protection, through a series of stormwater basin retrofits. Through its Municipal Separate Storm Sewer System (MS4) Permit, the Township is required to prepare and implement a pollutant reduction plan to cut down on pollutants entering creeks and streams through stormwater. When it rains, stormwater carries dirt, debris, oils, and other pollutants from roadways, parking lots, and other surfaces into the drainage system, which discharges to area creeks and streams. The Authority's stormwater basin retrofits represent the first step in helping to reduce pollutants entering waterways.

CONSTRUCTION WILL BEGIN THIS SPRING ON FOUR EXISTING STORMWATER DETENTION BASINS IN THE TOWNSHIP:

- 1 WASHINGTON STREET (NANCY RUN ESTATES PHASE 1)
Basin located between Oliver Court & Alder Road
- 2 WASHINGTON STREET (WALNUT HILLS)
Basin located between Freemansburg Ave & Allen Street
- 3 LONG COURT
Basin located at the end of the Long Court cul-de-sac
- 4 VINTAGE DRIVE (THE VINEYARD AT WAGNER FARM)
Basin located between Farmersville Road & Chant Court



The basins will each be retrofitted to an extended dry detention basin and will enhance water quality while providing additional rainwater storage capacity. The proposed projects will include over-excavating and placing of amended soils, removal of existing low flow channels, resetting or installing stormwater outlet protection, modification of existing stormwater outlet structures, and final stabilization.

The project has been designed using innovative systems that reduce the total project cost and provide climate resiliency benefits. The process of adding amended soils is critical to maximizing water quality and promoting stormwater infiltration. Typically, amended soils are transported to a site; however, the project has been designed to enable the soils that are currently present to be amended onsite, which will reduce the amount of material transport necessary, ultimately reducing vehicle miles traveled and resulting in a cost savings for the Authority.

This project is the first of several stormwater and flood mitigation improvements that residents will see going to construction in the coming years. The Pollution Reduction Basin Retrofits project is one of several priority projects identified in Bethlehem Township's Stormwater Capital Improvements Plan.

For more information on the plan and other projects on the horizon, including additional basin retrofits, visit: <https://bethlehemtownship.org/stormwater-projects>